



Planning and Transportation Committee

Date: TUESDAY, 12 JANUARY 2016

Time: 10.30 am

Venue:

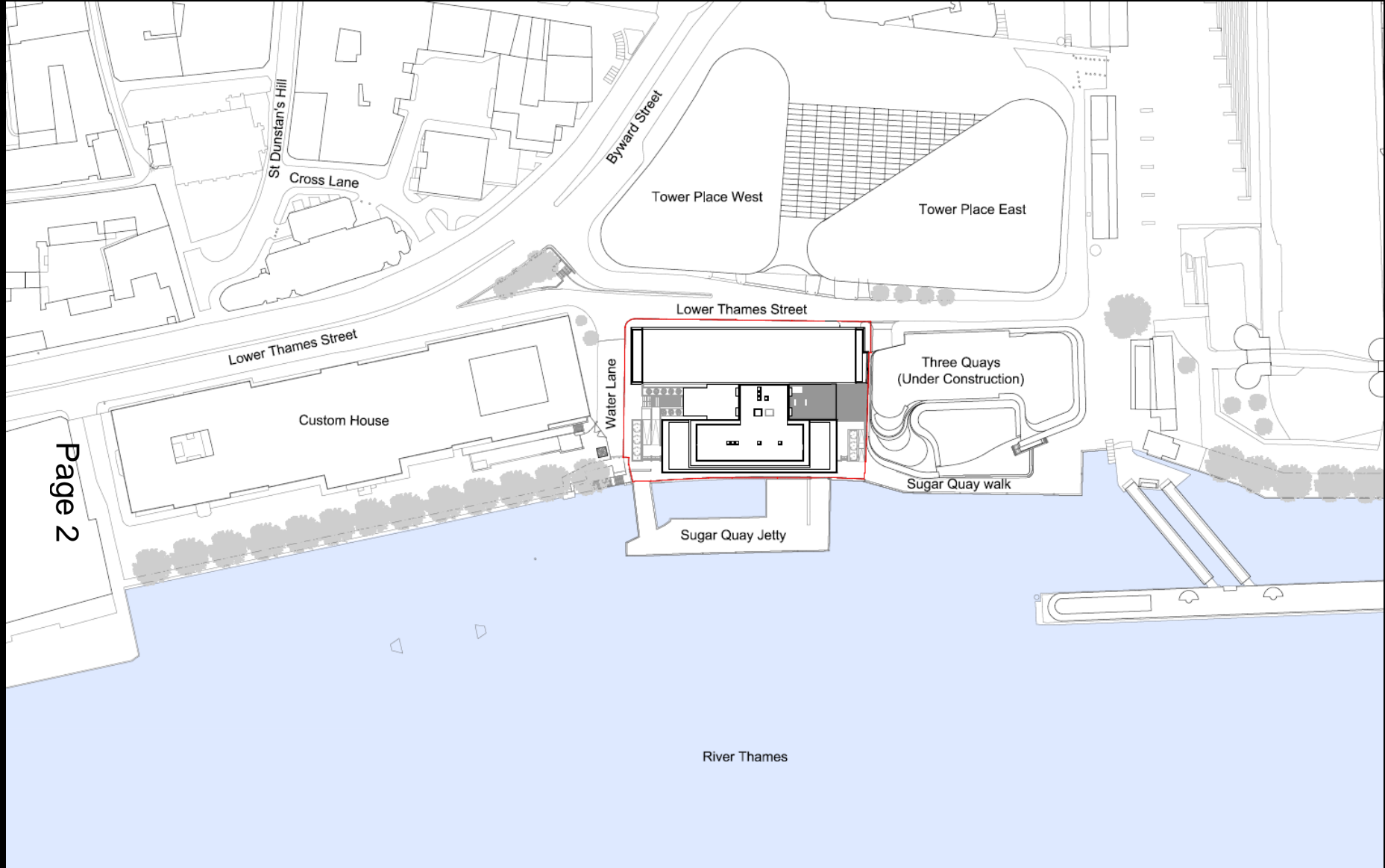
COMMITTEE PRESENTATION

This page is intentionally left blank

Planning & Transportation Committee

12th January 2016

Sugar Quays, Lower Thames Street

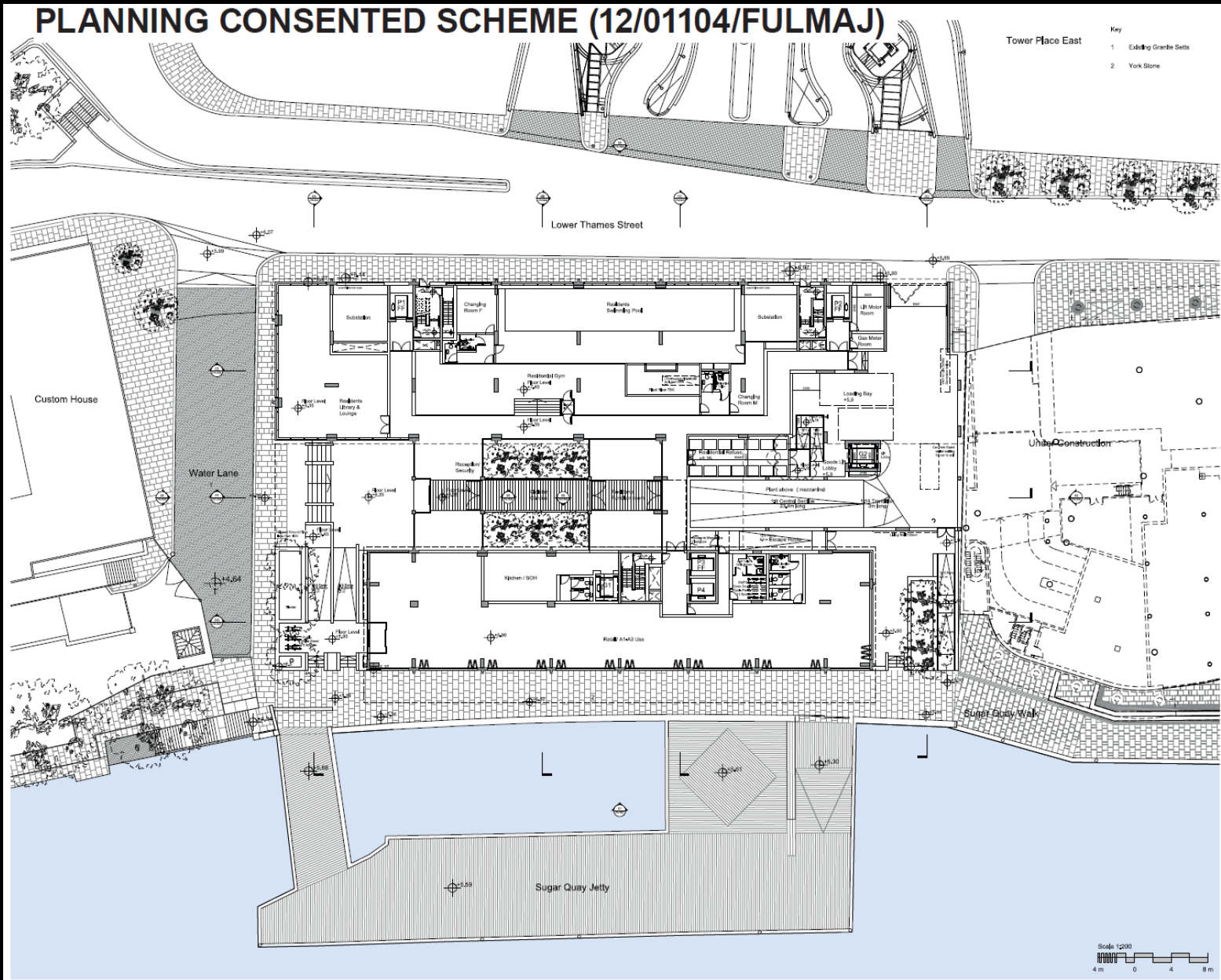


Page 2

Proposed site location plan

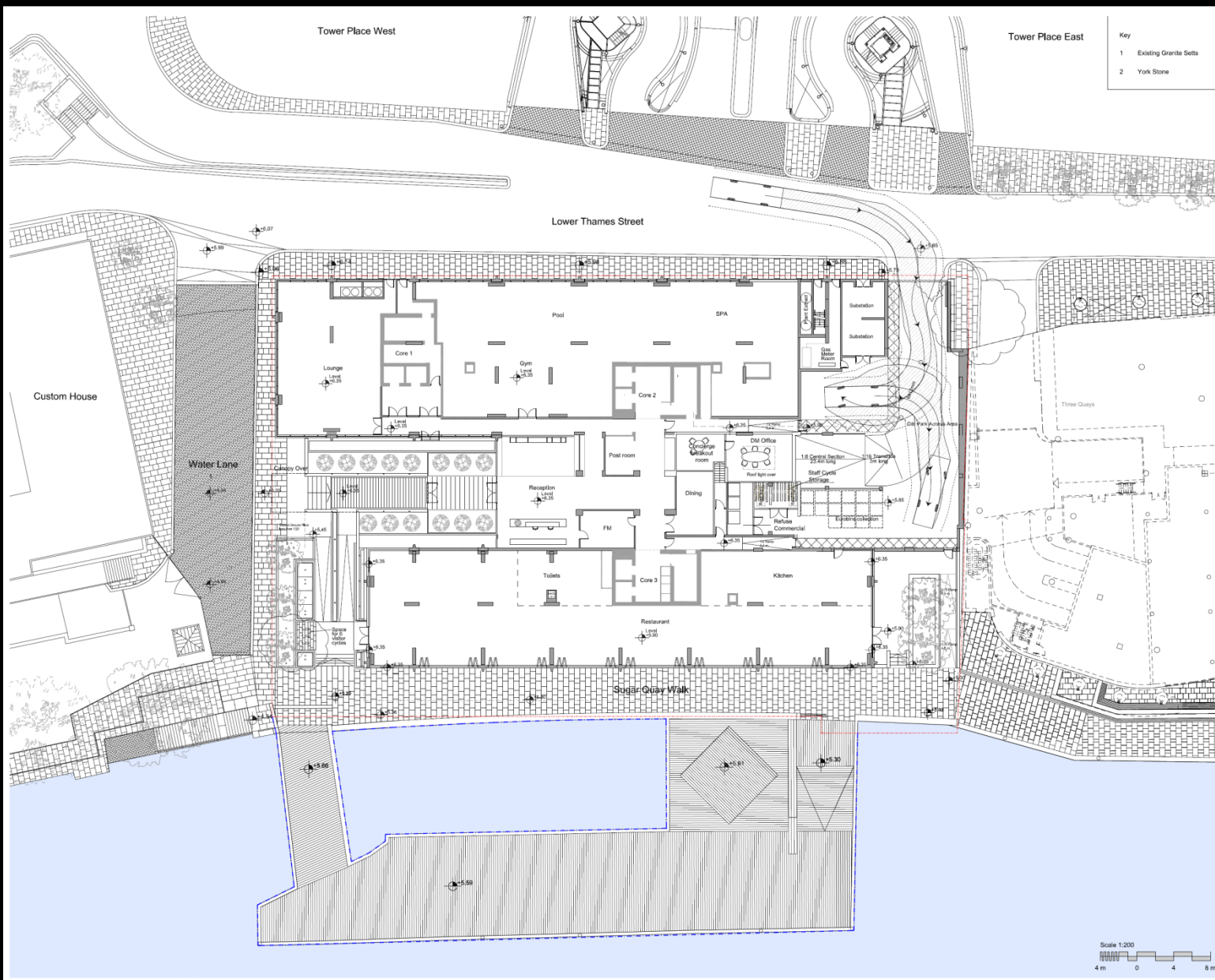
Sugar Quays, Lower Thames Street

PLANNING CONSENTED SCHEME (12/01104/FULMAJ)



Approved ground floor

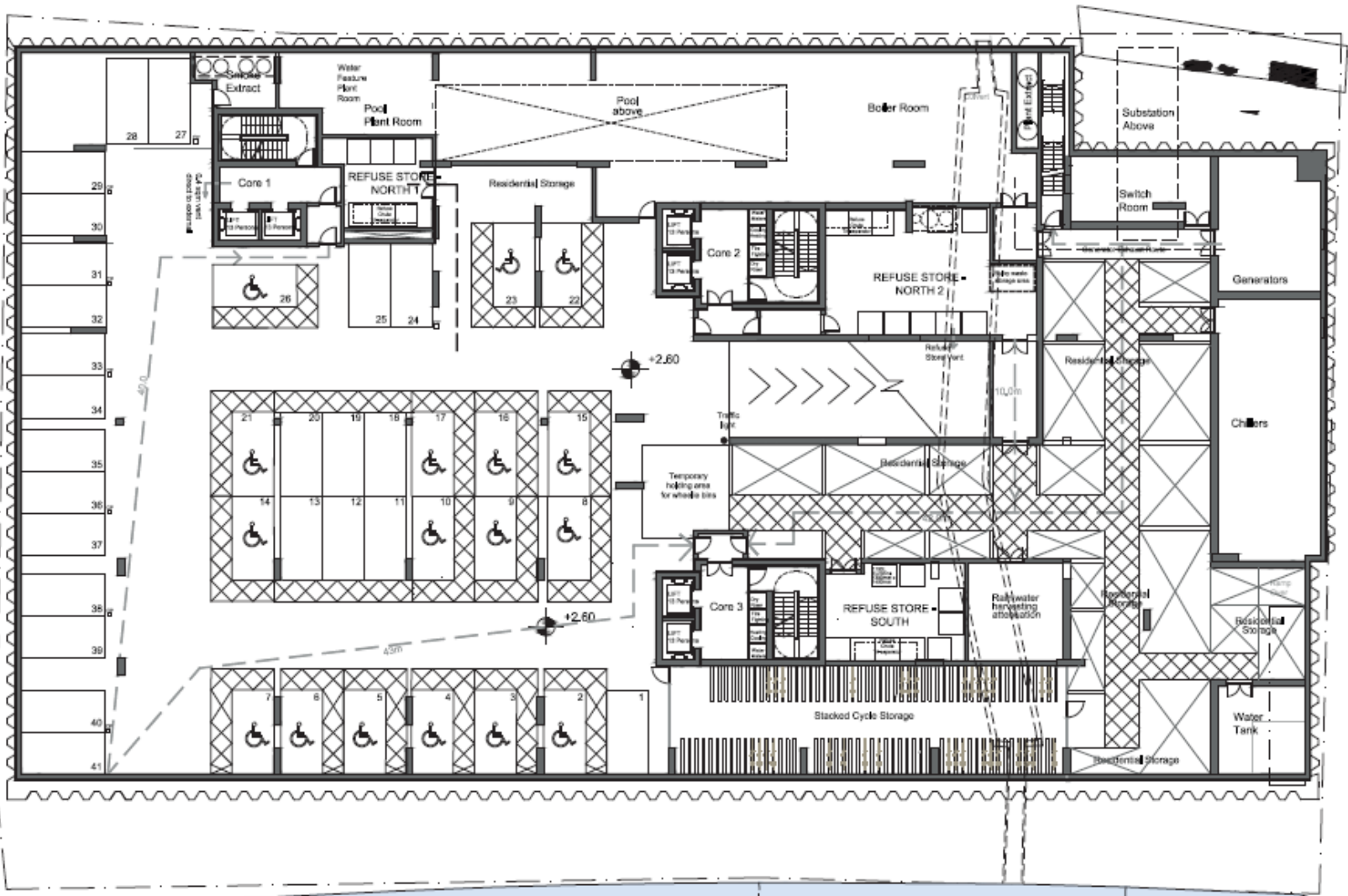
Sugar Quays, Lower Thames Street



Proposed ground floor

Sugar Quays, Lower Thames Street

Page 6

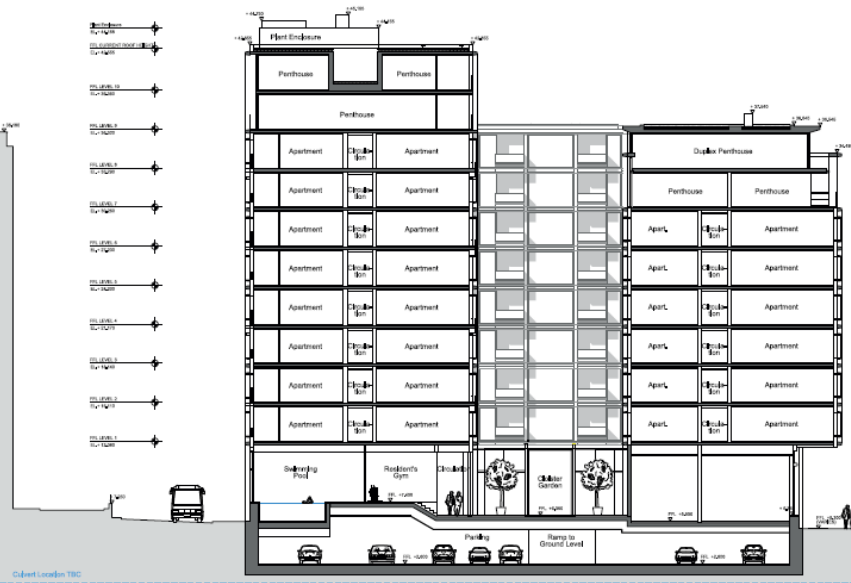


Proposed basement floor

Sugar Quays, Lower Thames Street

PLANNING CONSENTED SCHEME (12/01104/FULMAJ)

Page 7



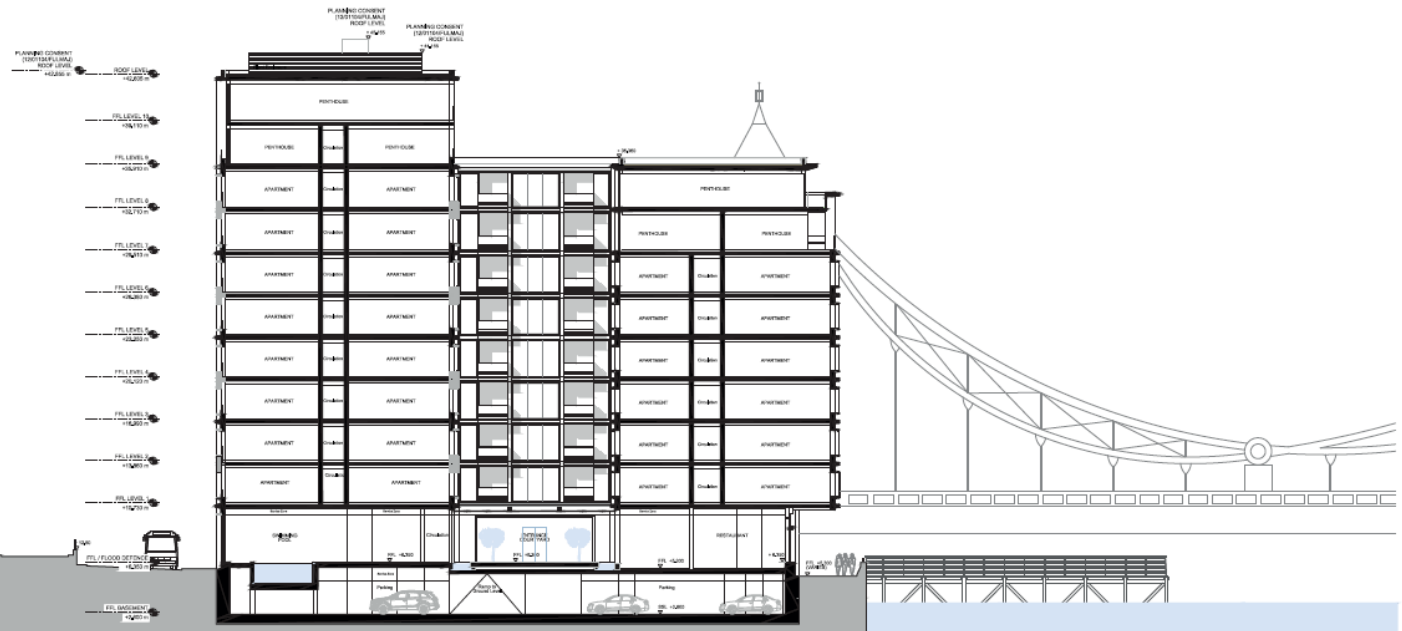
Scale 1:200

Approved section BB cross section

Sugar Quays, Lower Thames Street

SECTION 73 APPLICATION

Page 8



Proposed section BB

Sugar Quays, Lower Thames Street



Approved scheme

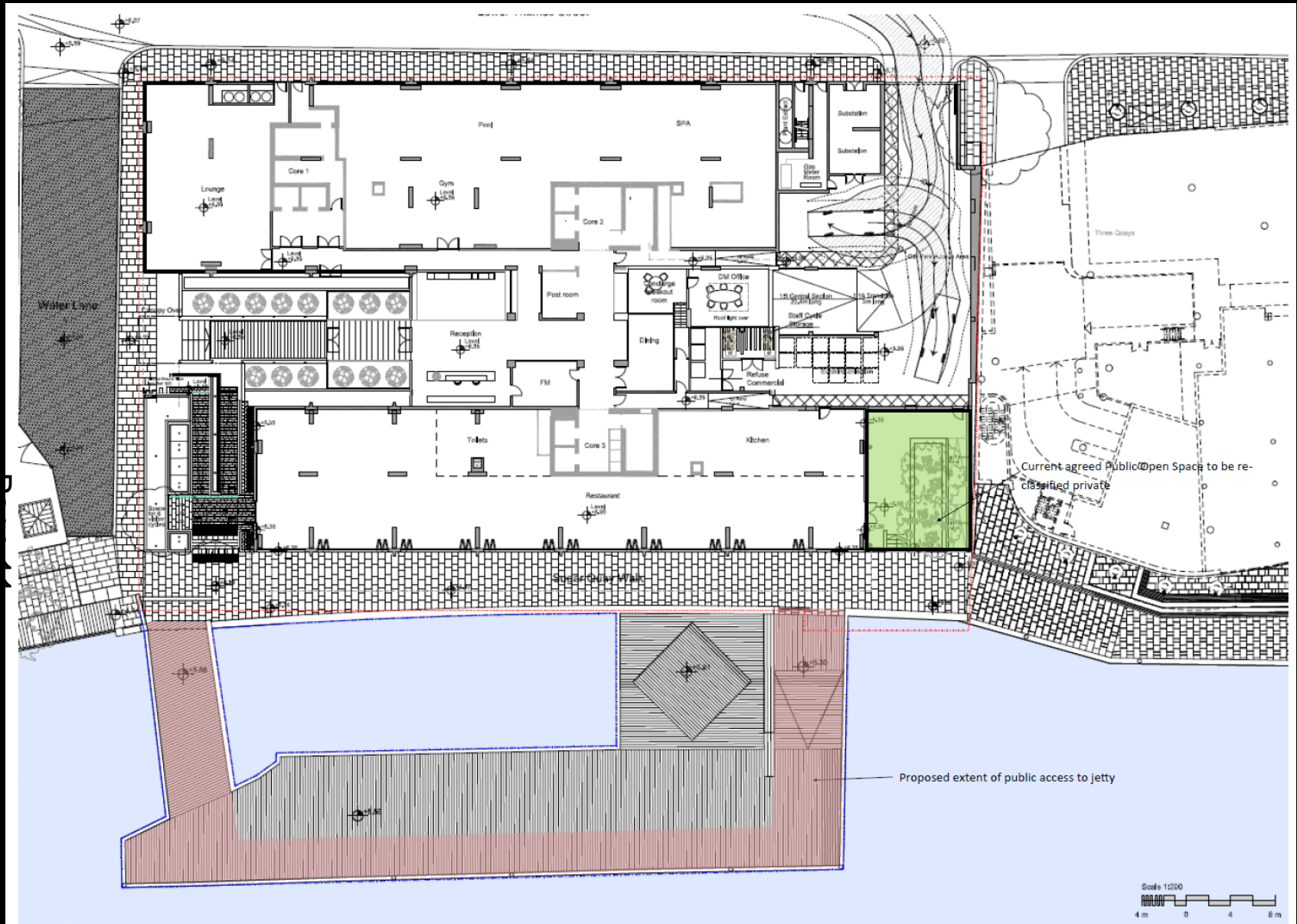
Sugar Quays, Lower Thames Street



Page 10

Proposed scheme

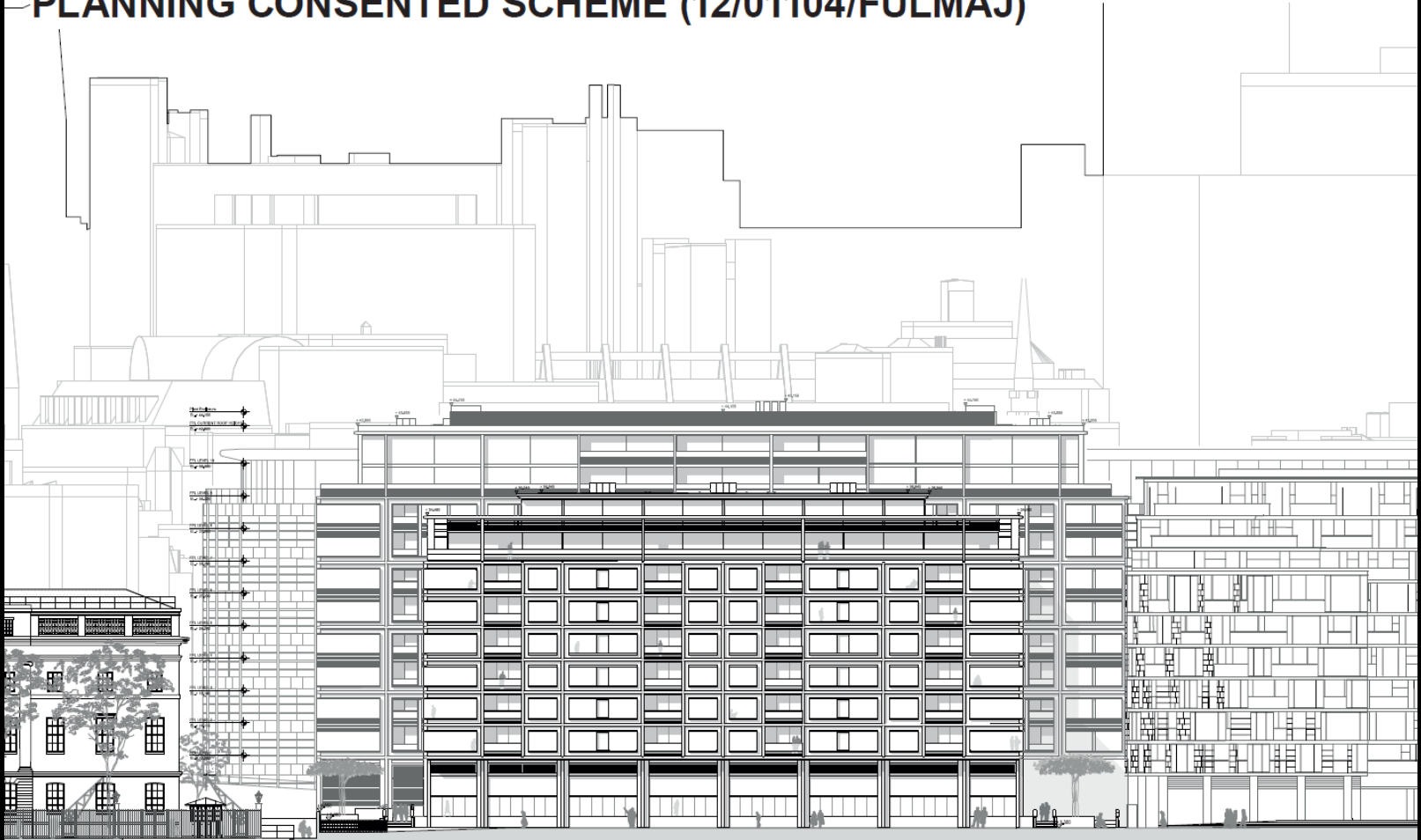
Sugar Quays, Lower Thames Street



Proposed jetty ground floor

Sugar Quays, Lower Thames Street

PLANNING CONSENTED SCHEME (12/01104/FULMAJ)

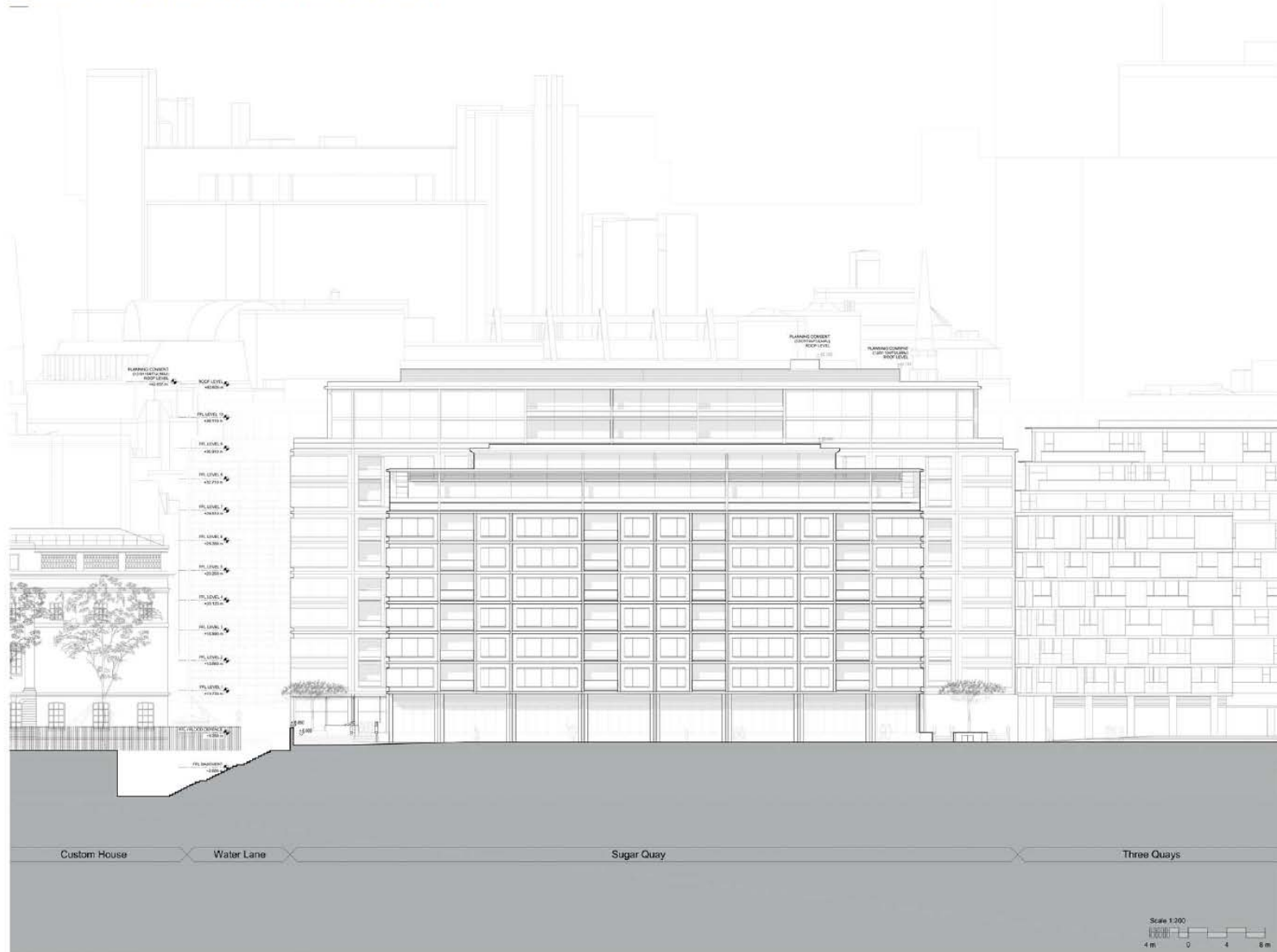


Scale 1:200
4m 0 4 8m

Approved south elevation

Sugar Quays, Lower Thames Street

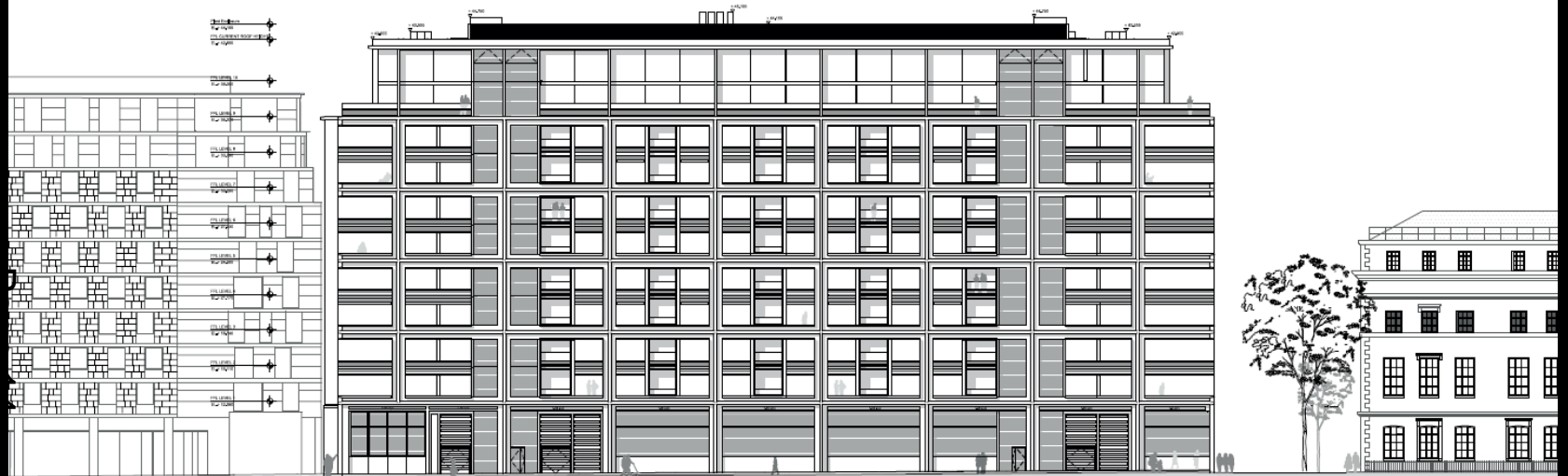
SECTION 73 APPLICATION



Proposed south elevation

Sugar Quays, Lower Thames Street

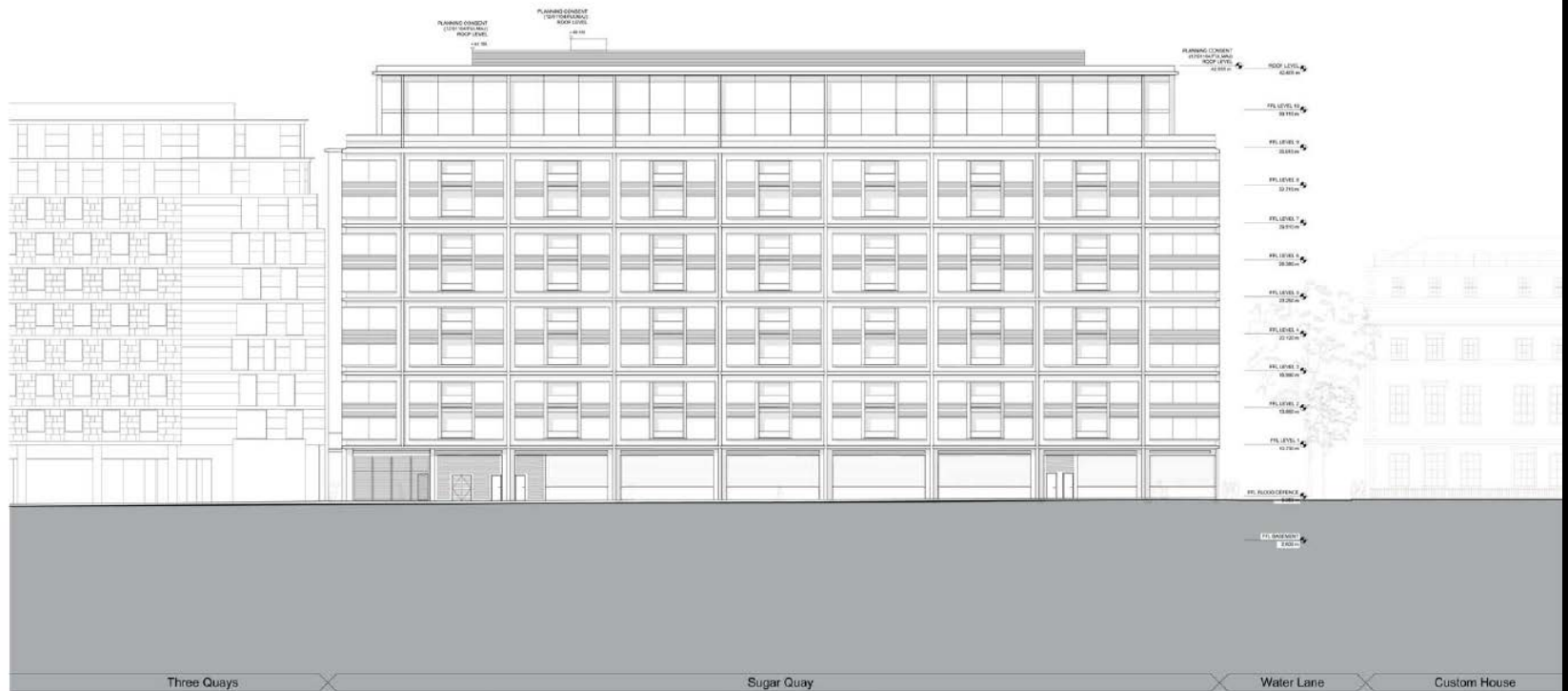
PLANNING CONSENTED SCHEME (12/01104/FULMAJ)



Approved north elevation

Sugar Quays, Lower Thames Street

SECTION 73 APPLICATION



Proposed north elevation

Planning & Transportation Next Committee

2nd February 2016

This page is intentionally left blank